



GRIDZTM SOFT PAK

GRIDZ 2x4 Soft Pak (4 PANELS - 2' x 4' each)

Basic Instructions

Access a growing collection of design ideas and instructions in text, pictures and videos online at <http://gridz.info>.

<http://gridz.info> World Center for more GRIDZ Information

1 PREPARE GRIDZ

Panels are coated with a non-toxic, sticky, wax coating to help hold balloons in place.

Lay out GRIDZ Panels with the "R" in the upper left hand corner.

Pull off the Carrier Tabs (shown in grey) on the left and right.

Overlap one row of dumbbell shapes to connect GRIDZ panels one above the other.

Overlap one column of dumbbell shapes to connect GRIDZ panels one beside the other.

(1) Pull out dumbbell shapes where overlapped.
(2) Wrap "twist tie" several times around or loop cable tie as shown below and tighten to connect overlapped panels.

Stretch GRIDZ straight UP.

If openings stick; bend up & down on both sides then pull apart.

2 PREPARE BALLOONS

Inflate & squeeze balloons

Size balloons 7.25" diameter

Tie balloons in very tight pairs.

Balloons may be loaded in singles, but it is less efficient.

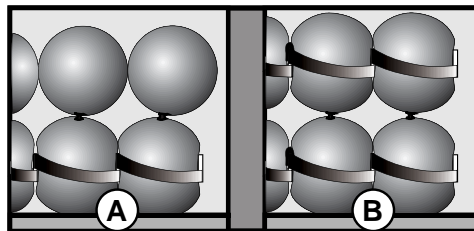
For more security, strength & efficiency use strings of double ended balloons.

3 LOAD BALLOONS

Roll balloons into place with the dark spot on the tops of the balloons pressed against the Matrix and the necks of both balloons pressed against the strap between the balloons.

Equal portions of each balloon should be above and below the GRIDZ straps.

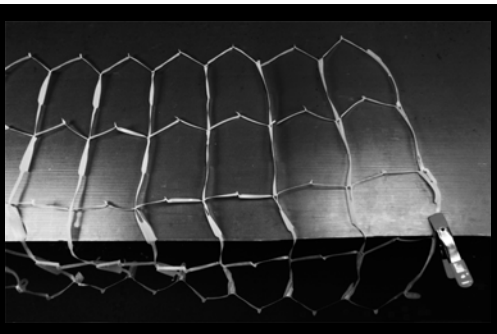
DOUBLE LAYER LOADING
Load balloons into first framework. Place one balloon of each pair in an opening and one balloon above and outside the framework as shown in (A). Then, force each of the loose balloons into the corresponding opening of the second framework as shown in (B).



NOTES & TIPS

- (1) Reinforce your display with rods or tubes through a series of the dumbbell shaped openings.
- (2) Single sections of GRIDZ Soft Pak frameworks are called "GRIDZ Panels", "Balloon Panels" or "Panels".
- (3) The best balloon inflation size can vary depending on softness and slickness of balloons. Test for best results.
- (4) Load GRIDZ Panels with balloons on a firm, flat surface.
- (5) Use GRIDZ Soft Pak Graph Paper to lay out your designs and build scale models to test your ideas.
- (6) Use cable ties to connect GRIDZ Soft Pak Panels to the Deco GRIDZ Snap Pak Squares and to SDS frames.

- (1) Rotate GRIDZ Panel 90 degrees counter clockwise.
 - (2) Fix the right edge to the table.
 - (3) Stretch the Panel open to the left & fix the left edge to the table.
 - (4) Load balloons in the top row & then move down to the next row.
- You may detach the Panel from the table after the first row or two of balloons are loaded.





**GRIDZ™
SOFT PAK**

GRIDZ 2x4 Soft Pak

(4 PANELS - 2' x 4' each)

Layout
Graph Paper

Access a growing collection of design ideas and instructions in text, pictures and videos online at <http://gridz.info>.

<http://gridz.info> World Center for more GRIDZ Information

