

RMS™ Pumpkin In A Field

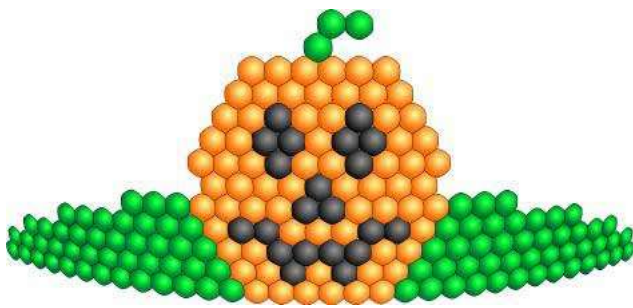


Figure 1

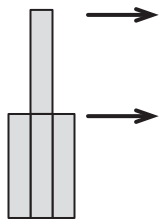


Figure 2

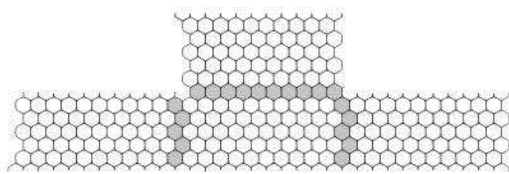


Figure 3

Notes:

- Curve your Pumpkin Scene as shown in Figure 1 to add a sense of three dimensions and to make the display much stronger.
- Tape the bottom strap of the curved display to the floor in a number of places to make your pumpkin scene stand up without additional framework.
- Be sure to read basic instructions enclosed with the framework for important details.

There are two popular sizes for the Halloween balloon display shown in Figure 1 to the left. Use 4 RMS™ Builder Panels with 11" balloons to make the Pumpkin Scene 18' wide by 6' tall.

- First, connect the 4 RMS™ Builder Panels as shown in Figure 2. The gray hexagons represent apertures, "openings", that are created when the panels are joined.
- Second, stretch open the Matrix. (It is normal for the Matrix framework to spring back to an almost closed position.)
- Third, Inflate, size and load the balloons in the color pattern shown in Figure 3 below.
- Fourth, Cut around four apertures as illustrated in "A-B" in Figure 4.
- Fifth, load three green balloons at the curved end as illustrated in "C".
- Sixth, slide the fourth aperture around one of the top orange balloons as shown in "D".
- Seventh, trim off the excess Matrix around the balloons in the Pumpkin Scene
- Balloon quantities required are the same for either the larger or smaller display:

21 Black Balloons
68 Orange Balloons
93 Green Balloons

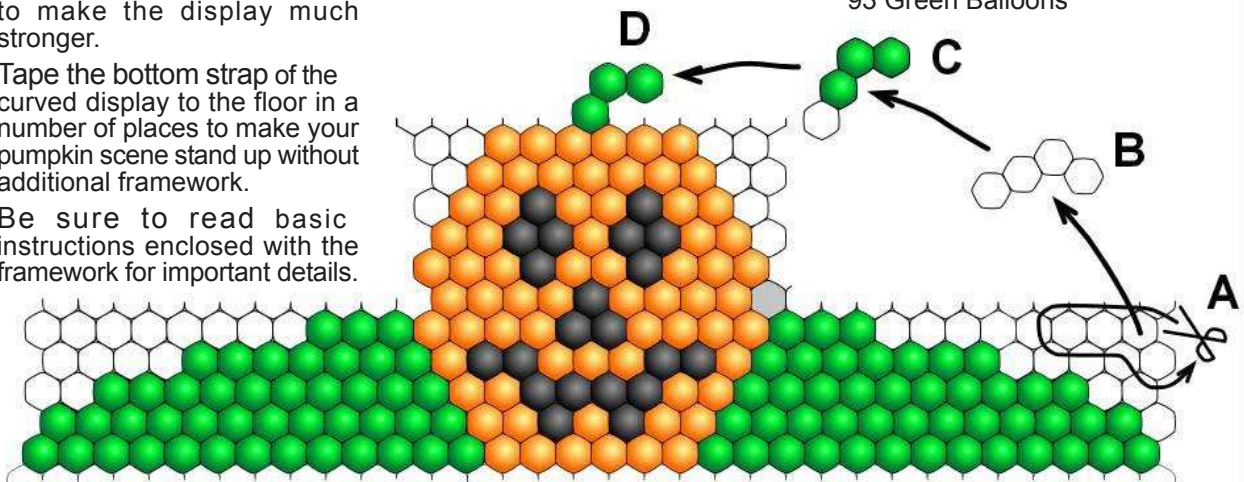


Figure 4

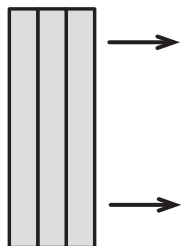


Figure 5



Figure 6

Make a smaller, 9' by 3' tall, version of this display by using 3 RMS Banner Panels connected end to end (Figure 5) with 5" balloons. Load balloons as shown in Figure 6 and trim around the balloons. Use the same technique shown above for adding the green stem on top.